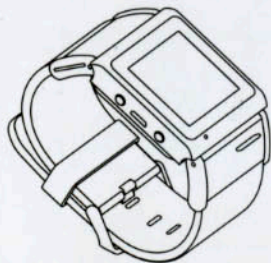


# E-CEROS



Quick Start User Guide

SMART

## Smart wearing, Smart life

Dear User, thank you for using our smart watch phone, please read this Quick Start User Guide Carefully before use.

It's a Watch,Phone, Camera,Recorder,FM and Music Player.  
Android 4.0.4 Smart Watch Phone with WiFi-GPS-Bluetooth.

### Specification

O.S. Android 4.0  
MT6577 Dual Core 1GHz CPU  
GSM 850/900/1800/1900MHz  
WCDMA 850/1900/2100MHz  
512MB RAM, 4GB ROM  
Display 1.54", TFT, 240x240Pixels  
Capacitive Touch Screen  
Speaker  
Microphone  
IP57 Waterproof Rating  
3MP (5MP Interpolation)Camera  
Bluetooth, Wi-Fi, GPS, Google Play,  
FM Radio, Micro SIM Slot  
Battery: 600mAh

### Content in Box

Android Phone Watch	x 1
User Manual	x 1
USB Cable	x 1
Earphones	x 1
Power Adapter	x 1



The illustration in this quick start user guide is for reference only  
Please refer to the actual product

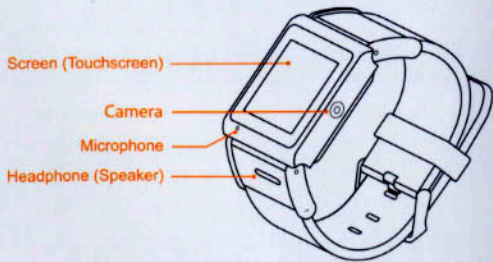
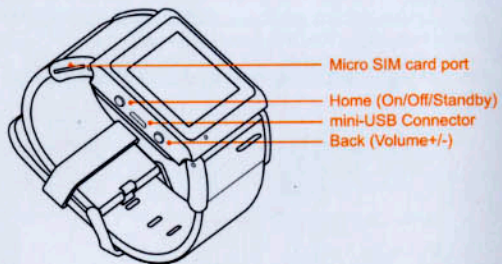
### Read Before Use

- 1 Your phone has been delicately designed and made, deserves to be taken good care of.
- 2 Do not use sharp objects to operate on touchscreen; when temperature is low, touchscreen will be less responsive, which is normal.
- 3 The product may be slightly warm when charging, which is normal. The product is equipped with temperature control system to ensure charging safety.
- 4 The product standby time and talk time may vary based on how the product will be used and different use habits.
- 5 The call quality may be influenced due to radio wave interference.
- 6 This product is not waterproof, please prevent water from entering watch, (if water entered, please switch off the phone immediately; use the product only after water completely dries up).
- 7 For better performance & display effect, do not use or place the product in dusty area.
- 8 If need to use other adaptor, please make sure its output voltage and current matches the original one.
- 9 Due to plug definition being different, other charging cable or earphone may not be compatible to use.

### Safety Instructions

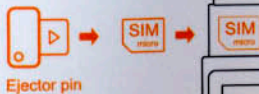
- 1 Keep the product & all accessories out of children's reach to prevent accidents.
- 2 Before driving, please prepare wired headset (or Bluetooth Headset) ready or switch to hands-free mode.
- 3 Turn off your phone on the plane or switch to flight mode, otherwise it may cause interference to the plane.
- 4 Use mobile phone very carefully when in gas station, oilfield, chemical plant or other hazardous areas, stick to the relevant regulations & terms.
- 5 Do not place the product in high humidity or high temperature area, otherwise the electric circuit may be interfered.
- 6 Please use and keep phone battery safely; When not using the product for a long period of time, please take the battery out of product.
- 7 Only our professional staff or assigned repair centre can disassemble or repair the product; trying to disassemble or repair by oneself may cause damage.
- 8 Use only accessories & battery approved by our company, otherwise it might cause trouble or damage to the phone.

## Phone Overview




## Micro SIM card

Please insert/take out micro SIM card only when the phone is switched off. Please insert micro SIM card into the card slot as per illustration shows, then use ejector pin to push micro SIM to the end.



Please make sure the Micro SIM card is inserted as per illustration shown. MicroSIM Chip facing down and the missing edge facing outward.

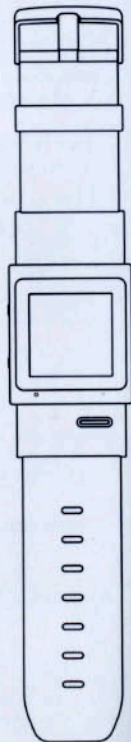
(If the micro SIM has not been pushed to the end, it will be ejected out)  
This product is only compatible with standard size micro SIM card. Please turn to network provider or use a micro SIM cutter.

micro SIM card 

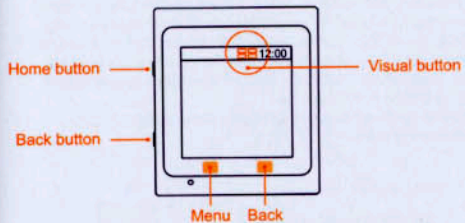


## Charging

For the first 3 charges, make sure to drain the battery before charging, and charge at least 4 hours. This will activate the battery to its best performance. The USB port could be used for charging, data transfer and earphone connection.



## Buttons




### Home button

1. Press button to light on/off display.
2. Press & hold button to power on/off.

### Back button

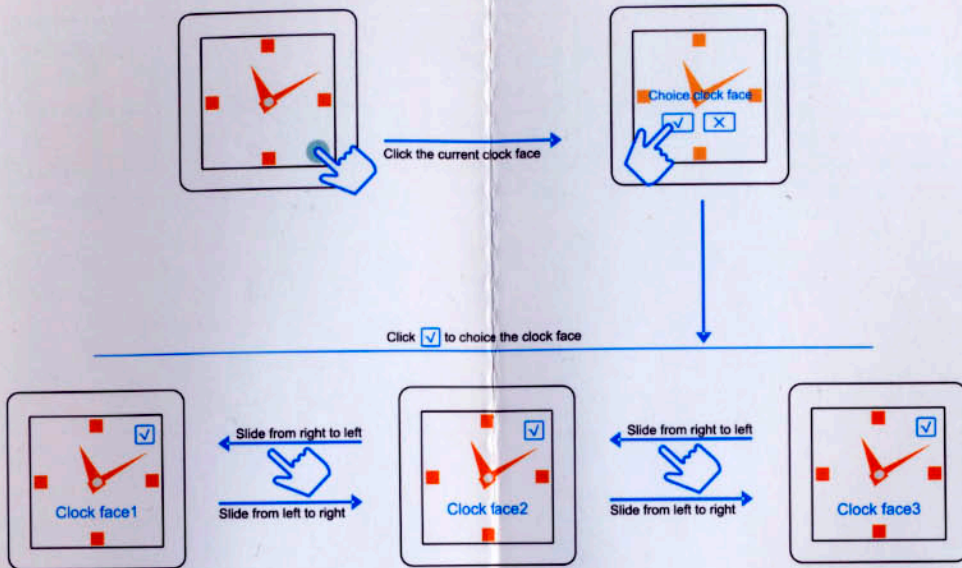
1. Press button to Exit current application or back to previous menu.
2. Press & hold button to activate volume controller. (for Multi-media application)

### Visual button

Under one APP's interface, press the visual button  on the top right corner of display to enter the APP's function menu.

**Note.**  
Press: 1s  
Press & hold: 3s

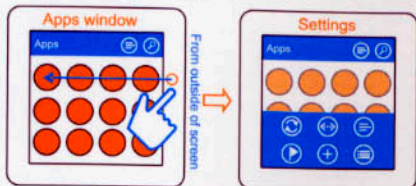
## Choice other clock face



## Apps Management

### Apps window settings

Under apps window , horizontally slide from right to left , you can perform the following operations.

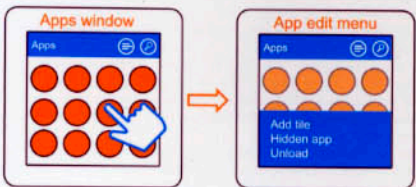


- Refresh
- List or grid
- App sort
- Hidden apps
- Batch add
- App settings

### App edited

Under apps window , tap and hold on an app icon, the system will pop up the edit menu.

- 1.If the app installed in system , it can be edited "Add tile" and "Hidden".
- 2.If the app installed in third party, it can be edited "Add tile" , "Hidden" and "Unload" .



## Updating the software

1. You can download kinds of Apps from Google Play (Note: may be part of the Apps cannot be used normally due to screen resolution compatibility issues.)
2. The software structure may be changed in the new version software, or more applications would be made available, please read the version instruction then.
3. This product supports customers' self-developed APPs or Gadgets; if you're a developer, please refer to the products' relevant specification & parameters.



Your smart watch phone supports OTA one-click update, you will be entitled to enjoy our consistent software update service.

Thank you for choosing our product!

Should you have any questions or concerns, please contact the retailer and they will do everything possible to assist you.

## Connecting the future

This product is Android Based Smartphone Watch, so you can install many APPs just using an ordinary smartphone. Meanwhile, considering watch phone' s special features:

Direct contact to human body / Easy to read & check

we will mainly concentrate in developing special apps in the following areas:

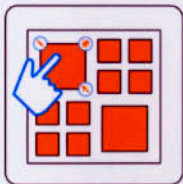
1. **Scientific exercise management**  
Exercise amount and Intensity monitoring, Speed monitoring
2. **Convenient outdoor activities**  
Temperature, Humidity, Altitude, Barometric pressure, UV radiation, Noise, Light intensity, Wind speed, Compass and Walkie talkie function
3. **Health management**  
Heart rate, Pulse, Temperature, Blood pressure etc monitoring, Furthermore we can consider to connect device to the medical care center.
4. **Your safety management**  
GPS positioning, Falling-sensor and SOS alarm, Movement tracing records, GEO- fencing etc.
5. **For other smart life**  
RFID, PayWave, Smart household applications

As you can see, it is no longer an ordinary mobile phone, it's an intelligent device that associates with you closely.

Note: The product you're holding in your hand may not support above all functions, because some functions may need backup from product hardware. We will continuously release many new products for you to choose from. Please stay tuned!

### Edit C-block

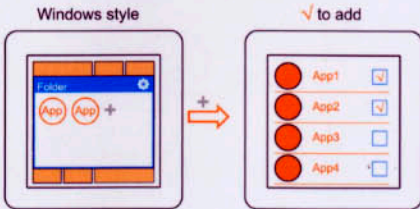
Tap and hold on desktop will enter editing mode for desktop and C-block, tap any C-block and you will see editing mark on three edges of the C-block. Meantime, you could drag this C-block and place it anywhere on the desktop.



- Enter the edit bar of C-block
- Delete C-block
- Reduce or enlarge C-block

### File folder C-block

1. File folder C-block will make it easier for you to manage apps.
2. Tap file folder C-block, you could then add apps to the file folder.
3. You could add more file folders and choose its style you like.



### More desktop editing

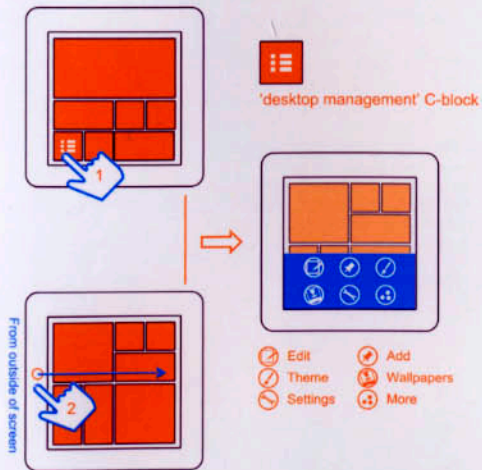
You could enter more desktop editing through these two methods:

1. To enter through 'Desktop Management' C-block:

In default setting, there's 'desktop management' C-block on the lower left corner of desktop, tap this C-block could enter desktop management menu.

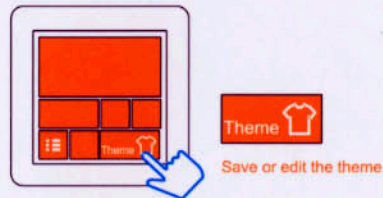
2. Sliding Shortcut to enter.

Under any desktop interface, horizontally slide from left to right on the screen, you will then see the desktop management menu showing up on the bottom of screen.



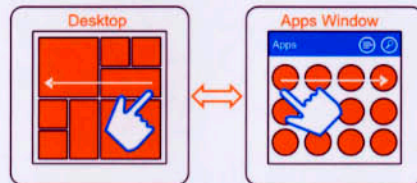
### Desktop Theme

1. The overall setting for desktop C-block and wallpaper etc, we call this desktop theme. There're several basic themes included in the software, which you could treat as reference.
2. In default setting, there's theme C-block on the lower right corner of desktop
3. You could freely edit and set desktop, and save as your personal desktop theme, this will be your original & unique theme.
4. C-block could not be retrieved if it's been deleted. Please use the theme retrieve function to retrieve the deleted C-block or add a new C-block.

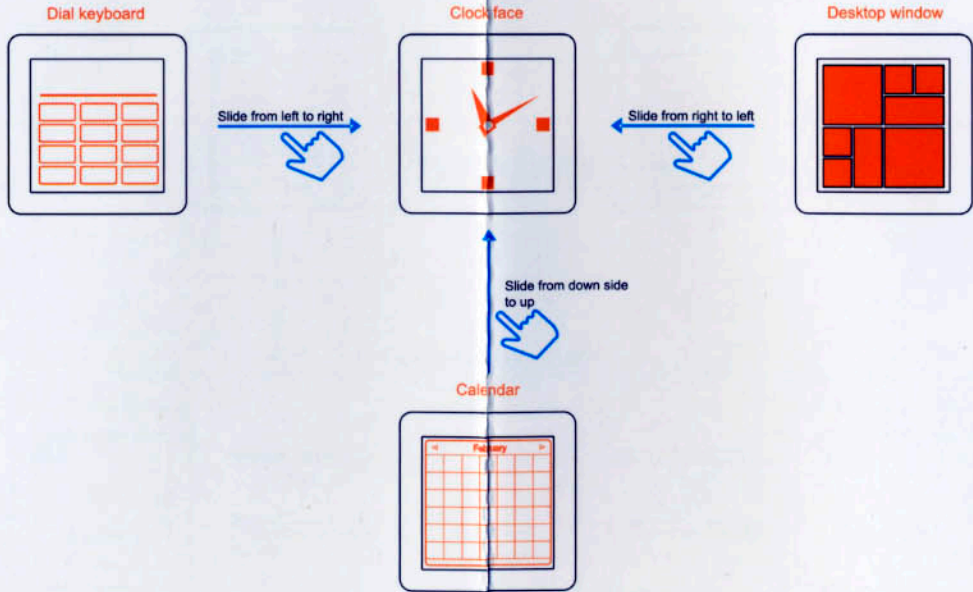


### Switch between desktop and apps window

1. Horizontally slide from right to left, will enter apps window.
2. Horizontally slide from left to right, will enter desktop.



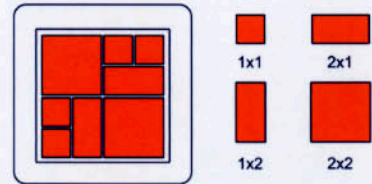
## Operation Guide



## Desktop Management

Know more about desktop and C-blocks.

1. There're many color blocks like ceramic blocks on the desktop, so we called them C-block. Each C-block functions as a shortcut, which could be linked to widget, app, shortcut or file folder etc.
2. Location, size, icon, background color of each C-block could be customized freely; also distance between C-block could be set.
3. User could add or delete any C-block from desktop, also could change theme of the desktop.
4. For more desktop management info, please enter desktop management menu.



More C-block size for you to choose from.

